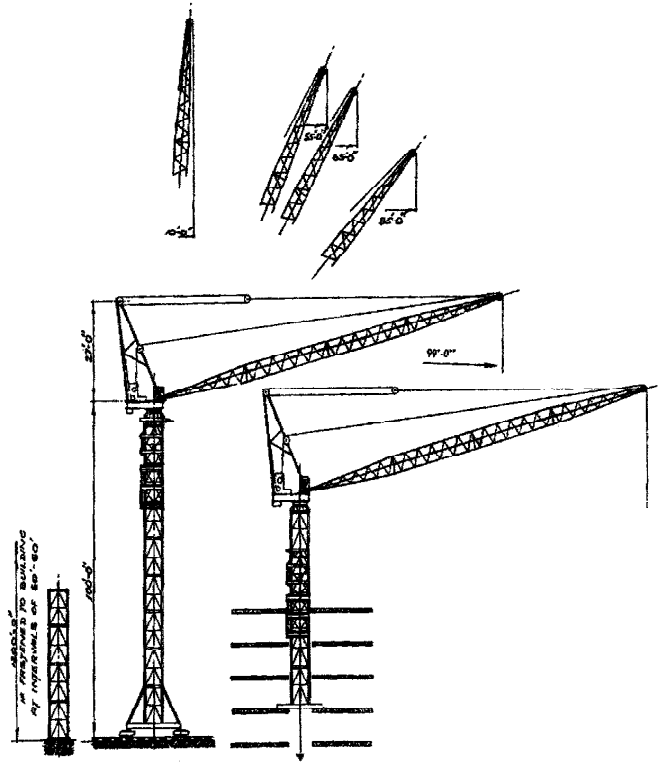


LINDORES

CONSTRUCTION LOGISTICS

FAVELLE FAVCO M60R TOWER CRANE/ RECOVERY CRANE

Radius	Main Boom Length			
	16.3	25.2	31.1	37
2.8	12			
3.3	12	12		
3.8	12	12	12	
4.5	12	12	12	6.2
8.1	12	12	12	6.2
9.1	12	12	12	6.2
9.6	12	12	10.5	6.2
10.0	12	10.8	10.1	6.2
10.8	10	10	10	6.2
12.0	9	9	8.9	6.2
13.6	8.5	8.5	8	6.2
14.0	7.5	7.3	7	6.2
15.6	7	7	7.5	6.2
16.0	6.5	6.7	6.5	5.9
20.0		5	5	4.7
24.0		3	3.9	3.7
24.5		3.3	3.2	3.1
28.0			2.9	2.9
30.5			2.2	2.4
32.0				2.3
36.0				1.5



Notes on Double Fall/Triple Fall

Double fall capacities are shown in shaded area.
 Double fall capability available on 16.3m to 37m booms .
 triple fall capability available on 16.3m to 31.08m boom only

Notes on Single Fall

Maximum capacity for single fall is 4 t
 Weight of Hook is not factored into safe working Load
 SWL ratings are based on hook at boom heel level

Load Chart without Counterweight

There is specially designed load chart for crane without counterweight please contact our Sales team for further information